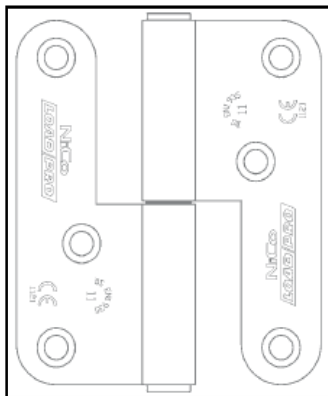


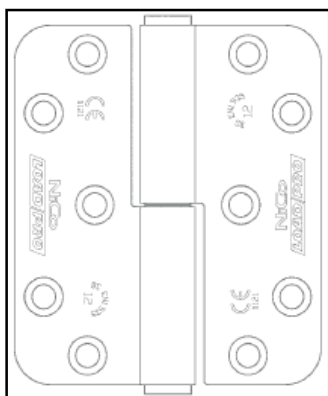
NICO 4710 Lift off Hinge (Handed)
4710 - 85 x 76mm Symmetrical Lift off Hinge

- Grade 304 Stainless Steel or CS4 Mild Steel EN1935:2002 Grade 10.
 - CE Certificate Nos. 1121-CPD-AC0075/AC0076.
 - Fire tested in accordance with EN1634-1:2000 & CE Marked
 - Supplied with 10x 11/4" screws.
 - Maximum adjusted door weight : 60kg.
 - Recommended minimum door thickness : 35mm
- Zinc Plated, Electro Brass ,Zinc Yellow, Satin Nickel , Super coat 500, Colour Coated (Ral) ,Satin Stainless Steel & Polished Stainless Steel



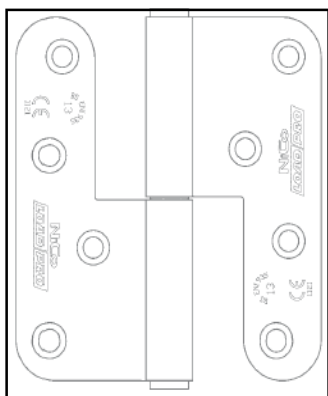
NICO 4715 Lift off Hinge
4715 - 98 x 84mm Offset Lift off Hinge (Handed)

- Grade 304 Stainless Steel or CS4 Mild Steel EN1935:2002 Grade 10.
 - CE Certificate Nos. 1121-CPD-AC0077/AC0079.
 - Fire tested in accordance with EN1634-1:2000 & CE Marked
 - Supplied with 10x 11/4" screws.
 - Maximum adjusted door weight : 80kg.
 - Recommended minimum door thickness : 35mm
- Zinc Plated, Electro Brass ,Zinc Yellow, Satin Nickel , Super coat 500, Colour Coated (Ral) ,Satin Stainless Steel & Polished Stainless Steel



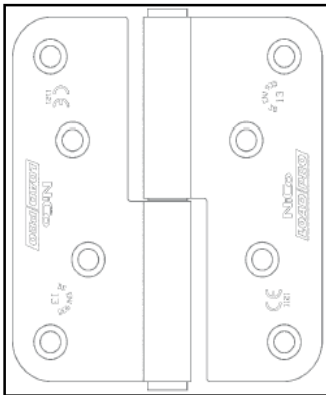
NICO 4717 Lift off Hinge (Handed)
4717 - 94 x 84mm Symmetrical Lift off Hinge

- Grade 304 Stainless Steel or CS4 Mild Steel EN1935:2002 Grade 12.
 - CE Certificate Nos. 1121-CPD-AC0080/AC0082.
 - Fire tested in accordance with EN1634-1:2000 & CE Marked
 - Supplied with 10x 11/4" screws.
 - Maximum adjusted door weight : 100kg.
 - Recommended minimum door thickness : 44mm
- Zinc Plated, Electro Brass ,Zinc Yellow, Satin Nickel , Super coat 500, Colour Coated (Ral) ,Satin Stainless Steel & Polished Stainless Steel



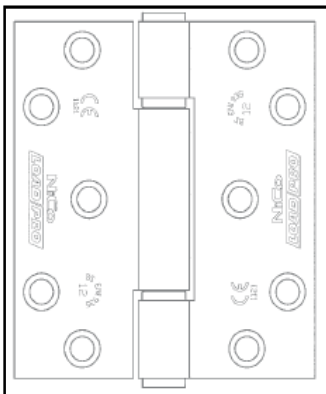
NICO 4720 Lift off Hinge (Handed)
4720 - 110 x 98mm Offset Lift off Hinge

- Grade 304 Stainless Steel or CS4 Mild Steel EN1935:2002 Grade 13.
 - CE Certificate Nos. 1121-CPD-AC0084/AC0086/AC0090
 - Fire tested in accordance with EN1634-1:2000 & CE Marked
 - Supplied with 10x 11/4" screws.
 - Maximum adjusted door weight : 120kg.
 - Recommended minimum door thickness : 44mm
- Zinc Plated, Electro Brass ,Zinc Yellow, Satin Nickel , Super coat 500, Colour Coated (Ral) ,Satin Stainless Steel & Polished Stainless Steel



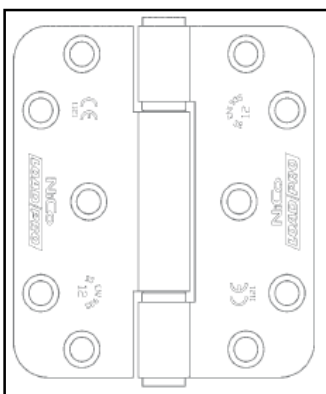
NICO 4722 Lift off Hinge (Handed)
4722 - 110x98mm Symmetrical Lift Hinge

- Grade 304 Stainless Steel or CS4 Mild Steel EN1935:2002 Grade 13.
- CE Certificate Nos. 1121-CPD-AC0084/AC0086/AC0090
- Fire tested in accordance with EN1634-1:2000 & CE Marked
- Supplied with 10x 11/4" screws.
- Maximum adjusted door weight : 120kg.
- Recommended minimum door thickness : 44mm
- Finishes: Zinc Plated, Electro Brass, Zinc Yellow, Satin Nickel, Super coat 500, Colour Coated (Ral), Satin Stainless Steel & Polished Stainless Steel



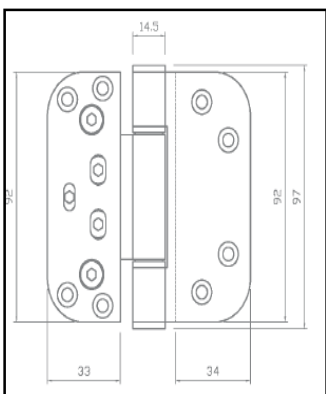
NICO 4815 Butt Hinge
4815 - 100x88mm Triple Knuckle Butt Hinge

- Grade 304 Stainless Steel Grade 13
- CS4 Mild Steel EN1935:2002 Grade 12
- CE Certificate No. 1121-CPD-AC0090 Stainless Steel
- CE Certificate Nos. 1121-CPD-AC0083/85/89 Mild Steel
- Maximum adjusted door weight 120kg Stainless Steel
- Maximum adjusted door weight 100kg Mild Steel
- Fire tested in accordance with EN1634-1:2000 & CE Marked
- Supplied with 10x 11/4" screws.
- Recommended minimum door thickness : 44mm
- Finishes as 4815R



NICO 4815R Butt Hinge (Radius Corners)
4815 - 100x88mm Triple Knuckle Butt Hinge

- Grade 304 Stainless Steel Grade 13
- CS4 Mild Steel EN1935:2002 Grade 12
- CE Certificate No. 1121-CPD-AC0090 Stainless Steel
- CE Certificate Nos. 1121-CPD-AC0083/85/89 Mild Steel
- Maximum adjusted door weight 120kg Stainless Steel
- Maximum adjusted door weight 100kg Mild Steel
- Fire tested in accordance with EN1634-1:2000 & CE Marked
- Supplied with 10x 11/4" screws.
- Recommended minimum door thickness : 44mm
- Finishes: Zinc Plated, Electro Brass, Zinc Yellow, Satin Nickel, Super coat 500, Colour Coated (Ral), Satin Stainless Steel & Polished Stainless Steel



NICO 4915 3D Adjustable Hinge
4915 - 92x92x14mm/2.7mm 3D Hinge

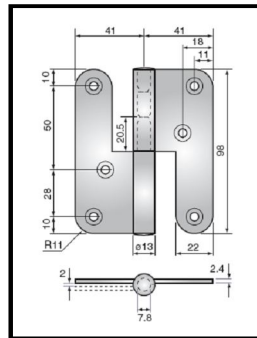
- CS4 Mild Steel / Zinc Alloy.
- Tested to comply with BS EN1935:2002 Grade 11.
- Adjustable in 3 axes with door in situ.
- Maximum adjusted door weight : 80kg.
- Choice of high corrosion resistant finishes.
- Finishes: Zinc Yellow, Super coat 500, Colour Coated (Ral).



EUROSPEC Ball Bearing Butt Hinges

Technical Specification

102mm x 76mm x 3mm Ball Bearing Butt Hinges Suitable for 30/60min Fire Doors
Available in Polished Stainless Steel, Satin Stainless Steel & PVD Brass.
Square Corners and Radius Corners



ASSA/YALE 3220 HINGE

Technical Specification

Journal Supported Lift-Off Hinges for general applications
Supplied with 11/4" x 10g fully threaded countersunk woodscrews
Manufactured from Grade CS4 rolled steel 98mm x 82mm
Tested and approved to BS EN1935 Grade 11 (Heavy Duty)
Max Door weight 80kg
Available in the following finishes
Simulated Stainless steel, Polished Chrome, Simulated Polished Brass
Bright Zinc, Satin Zinc Lacquer, Yellow Zinc Lacquer, Ral Colour Coatings

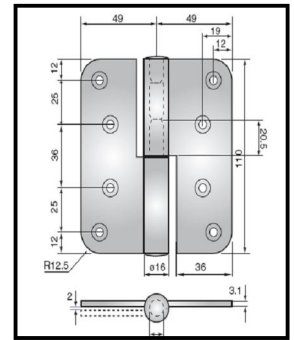


BRASS WASHERED BUTT HINGES

Brass Phosphor Bronze Washered Butt Hinge 127 x 76 x 3mm
Brass Phosphor Bronze Washered Butt Hinge 102 x 67 x 2.5mm
Brass Phosphor Bronze Washered Butt Hinge 76 x 50 x 2.5mm

Finish

Polished Lacquered Brass

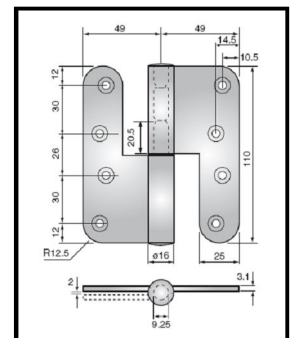


ASSA/YALE 3228-10 HINGE

Technical Specification

The 3228 is a Security Journal Supported Lift-off Hinge available in right or left handed.

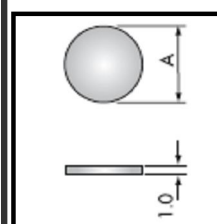
Supplied with 11/4" x 12g fully threaded countersunk woodscrews
Manufactured from Grade CS4 rolled steel 110mm x 98mm
Max Door weight 120kg
Available in the following finishes
Simulated Stainless steel, Polished Chrome, Simulated Polished Brass
Bright Zinc, Satin Zinc Lacquer, Yellow Zinc Lacquer, Ral Colour Coatings



ASSA/YALE 3228 HINGE

Technical Specification

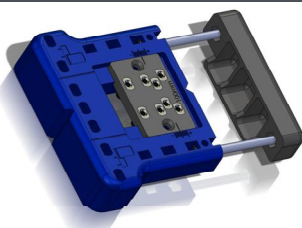
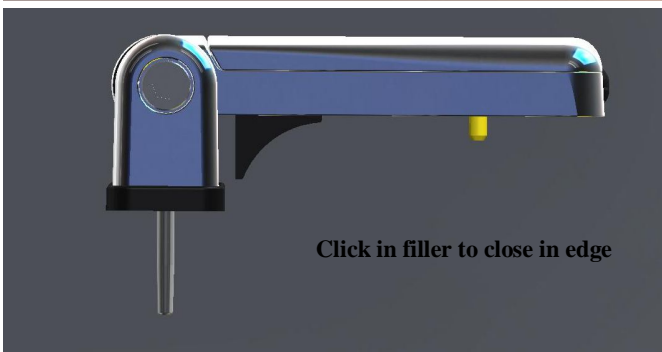
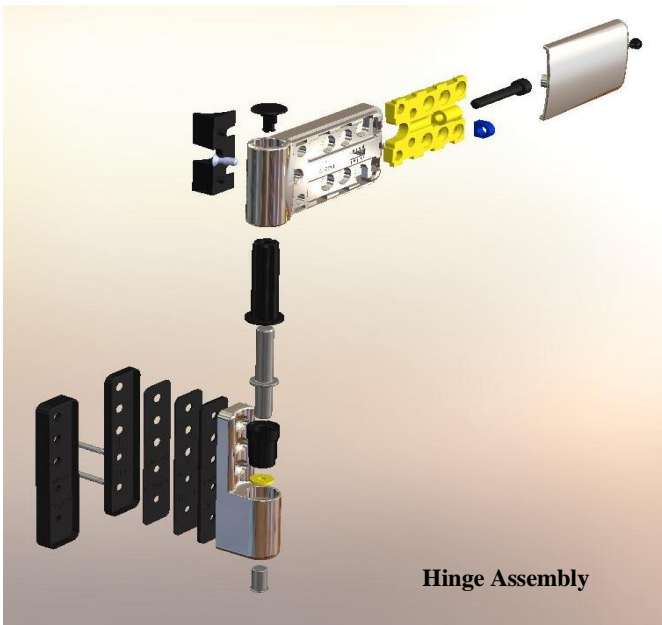
Journal Supported Lift-Off Hinges for heavy duty applications
Supplied with 11/4" x 12g fully threaded countersunk woodscrews
Manufactured from Grade CS4 rolled steel 110mm x 98mm
Tested and approved to BS EN1935 Grade 11 (Severe Duty)
Max Door weight 120kg
Available in the following finishes
Simulated Stainless steel, Polished Chrome, Simulated Polished Brass
Bright Zinc, Satin Zinc Lacquer, Yellow Zinc Lacquer, Ral Colour Coatings



Adjustment Disc

May be inserted into the hinge knuckle to raise the door
Note: the adjustment should be no more than 3mm. If this is insufficient then the fitting of the door hinges themselves will need to be adjusted.

Ref	A	Use with Hinge
7 x 1	7mm	3220
8.5 x 1.8	5mm	3228



SORRENTO 3D FLAG HINGES

- 85mm - 100mm Variants.
- PAS23/24 Compliant.
- One hinge fits all.
- Competitively priced.
- Robust performance.
- 3D Adjustment.
- Simple to mount and install.
- Easy fit profile filler chamfered and OV profiles (Sold Separately)
- Reduced fitting time.
- Far reaching screw positions for reinforcement pick-up.
- Over adjustment protection.
- Non-System specific (Universal base).
- Concealed layer packer system.
- Profile step heights 15—23.5mm.
- 120kg leaf carrying capacity (100mm hinge).
- 240hrs Neutral Salt Spray Test (Corrosion).
- 10 year mechanical guarantee.

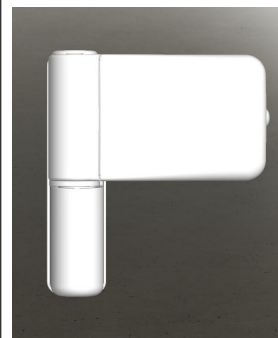
Adjustment

- 3D Adjustment single key (5mm hex)
- Compression + / - 1mm.
- Height + 4mm / - 1mm.
- Horizontal + / - 5mm.

Finishes

- White Powder Paint (RAL 9016)
- Caramel Powder Paint (RAL 8003)
- Dark Brown Powder Paint (RAL 8019)
- Black Powder Paint (RAL 9005)
- Polished Chrome
- Bright PVD Gold

85mm Hinge



100mm Hinge





Key Product Features

- Pre assembled ready to fit.
- Unique integral flag cover allowing easy access to lateral adjustment.
- Compression adjusts in linear motion with no affect on lateral
- adjustment which reduces the possibility of the door 'binding' In operation.
- Available in a range of finishes including: Gold (PVD), Chrome , White , Brown , Black , Tan , Cream and Grey.
- All finishes are UV rated.

A door hinge ideal foe UPVC door profiles, adjustment in 3 Dimensions with concentric compression adjustment. The Patriot Flag Hinge is supplied assembled and ready to fit, which dramatically Improves the fitting process. Compression and vertical height adjustments are simply undertaken by use of one Allen key in the same action. Also the compression adjustment operates In only the perpendicular plane and not an eccentric motion. This eliminates unwanted lateral movement, so preventing sash distortion. Once set, both the vertical height and compression adjustments are retained in the desired position by a unique 'Click Stop' device thus eliminating the need for a secondary plug retainer.

Testing And Accreditation

Salt spray –Zinc substrate has been tested at am Independent UKAS test Laboratory to BS EN 1670: 1998 and has achieved grade 4 classification across all finishes. PAS 23/24 compatible. Operation Durability - tested to 25.000 cycles.

Product Material Specifications

Zinc die cast components - ZA2 with Zinc passivate plus finish. Stainless steel parts are - 430 S17 stainless steel. Plastic parts are Nylon 66, UV stabilised ABS and ACETAL.

Nominal Step Heights and Shims

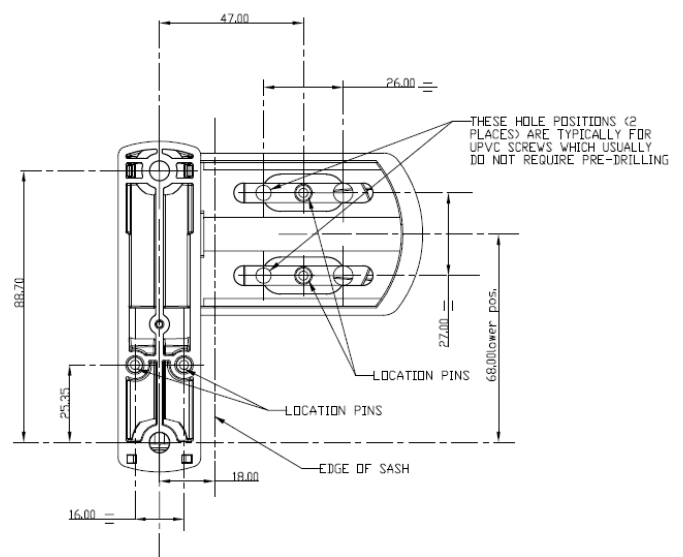
Low Hinge - 0740-2004 = 11.75mm
 High Hinge - 0740-2005 = 19.25mm
 Low Shim - 0740-022 = 2.5mm (In Black or White)
 High Shim - 0740-025 = 7.5mm (In Black or White)

Adjustment

Height: + 7.0mm
 Compression: +/- 1.75mm
 Lateral: +/- 5.5mm

Maximum Weight Carrying Capacity

2 Hinges - 80Kg
 3 Hinges - 120Kg





The Patriot Midi Hinge is a slimmer version of the Patriot high security hinge, this makes it ideal for slimmer frames without encroaching plaster lines. Incorporating all the same benefits as its sister product, the midi hinge is adjustable in 3 dimensions with concentric compression adjustment. The product is supplied pre-assembled and ready to fit, which dramatically improves the fitting process. Compression and vertical height adjustments are simply undertaken by the use of one Allen key in the same action. In addition, compression adjustment operate in only the perpendicular plane and not an eccentric motion. This eliminates unwanted lateral movement, so preventing sash distortion. Once set, both the vertical height and compression adjustments are retained in the desired position by a unique 'Click Stop' device thus eliminating the need for a secondary plug retainer.

Testing And Accreditation

Corrosion resistance on all finishes to the requirement of BS EN 1670 Grade 4. BS EN 1670: 1998 and has achieved grade 4 classification across all finishes. Operation Durability - tested to 100.000 cycles.

Product Material Specifications

die cast components - Zinc Alloy ZA2.
Stainless steel parts are - 430 S17 stainless steel.
Plastic parts are Nylon 66, UV stabilised ABS and ACETAL.

Nominal Step Heights and Shims

Low Hinge - 0740-2004 = 11.75mm
High Hinge - 0740-2005 = 19.25mm
Low Shim - 0740-022 = 2.5mm (In Black or White)
High Shim - 0740-025 = 7.5mm (In Black or White)

Adjustment

Height: + 7.0mm
Compression: +/- 1.75mm
Lateral: +/- 5.5mm

Maximum Weight Carrying Capacity

2 Hinges - 50Kg
3 Hinges - 100Kg

Key Product Features

- Pre assembled ready to fit.
- Unique integral flag cover allowing easy access to lateral adjustment.
- Compression adjusts in linear motion with no affect on lateral
- adjustment which reduces the possibility of the door 'binding' In operation.
- Available in a range of finishes including: Gold (PVD). Chrome , White , Brown , Black , Tan , Cream and Grey.
- All finishes are UV rated.

